

## Collision-free text placement in Adobe® Illustrator®

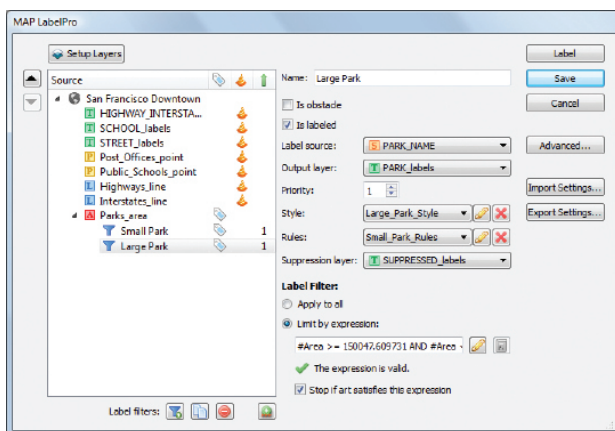
MAPublisher® LabelPro™ is an add-on to MAPublisher that offers advanced and intelligent labeling capabilities beyond those available in the standard Label Features and MAP Tagger Tool. It is powered by a sophisticated label placement engine that offers a user-friendly, rule-based interface to create collision-free labels.



Map courtesy of Media Ventures, Inc.

MAPublisher LabelPro contains many rules and algorithms that solve many of the most common map labeling problems such as complex conflict resolution across multiple layers, specifying data as obstacles and creating complex labeling conventions using user-defined rules.

MAPublisher LabelPro uses map attributes, rules and styles for labeling which provide a great level of detail and control. Map layers may be assigned in order of priority for labeling and set as label obstacles. In addition, create label filters to label unique values for a specified attribute. Labels can be placed on any defined text layer and unplaceable text can be ignored or placed on a suppression layer. Placement rules and styles can be saved to a file and imported or shared over a network.



Choose layers, designate label and obstacle layers, create rules, create label filters, assign styles and labeling priority.

Visit [www.avenza.com/mapublisher/maplabelpro](http://www.avenza.com/mapublisher/maplabelpro) for more details.

**Free evaluation downloads  
at [www.avenza.com](http://www.avenza.com)**

## Line specific rules

- Label lines using symbols (highway shields)
- Specify where the label starting point will be
- Choose to place the label on the centerline or offset it above, below, or vertically split
- Label a feature as a joined object or individual segments
- Label divided highways with only one symbol
- Set the spacing amount between words within the same label
- Repeat label instances using a specified distance
- Specify the overhang of a label off of an object

## Point specific rules

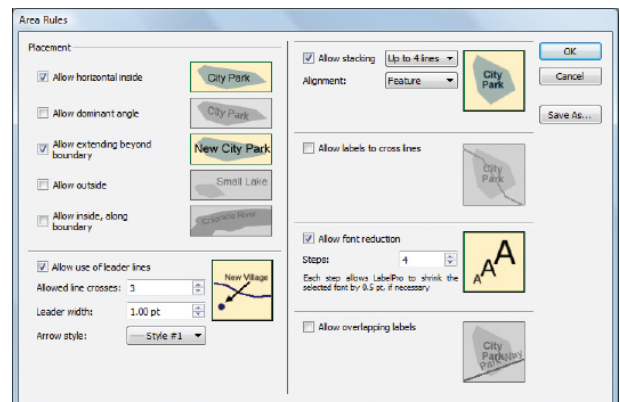
- Choose the label position by ranking up to eight positions around the point or choose to center the label on the point

## Area specific rules

- Label horizontally inside a polygon
- Label using the dominant angle inside a polygon
- Extend a label beyond the polygon boundary
- Label outside a polygon
- Label inside a polygon, along the perimeter

## Rules for all feature types

- Allow words to be stacked by a specified number of lines
- Determine whether to allow labels to cross lines
- Allow a font reduction that will incrementally reduce the text size to fit
- Customize leader line style and placement
- Choose to allow overlapping labels



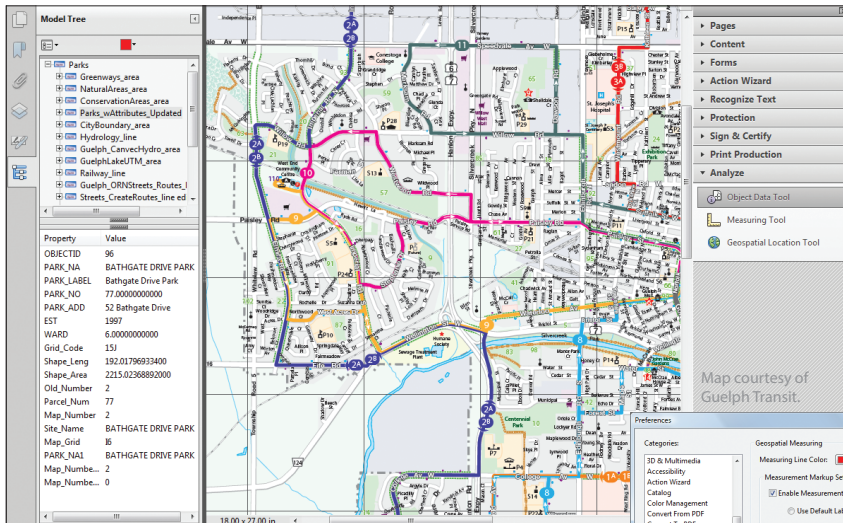
Fine tune labeling by setting up rules for Areas, Lines and Points.

"Projects that previously took three weeks to complete can now be done in two to three days, thanks to using the full features of MAPublisher and MAPublisher LabelPro."

*Jerry Wright, New Atlas dot Com, Inc.*

## Geospatial PDF Export

When Map Quality Matters®



▶ View feature attributes

▶ Interact with geospatial measurement tools

MAPublisher® has the ability to create interactive geospatial Adobe® Acrobat® PDF files that contain coordinate system and attribute data from any MAPublisher document. All feature attribute information, layers and map data is preserved upon export to PDF and is retrievable and searchable using the geospatial PDF features found in the latest versions of Adobe Acrobat and Adobe Reader.

Find locations, measure distances, perimeters and areas, add location markers, view and copy coordinates, query and search map attributes all from within Adobe Acrobat and Adobe Reader.

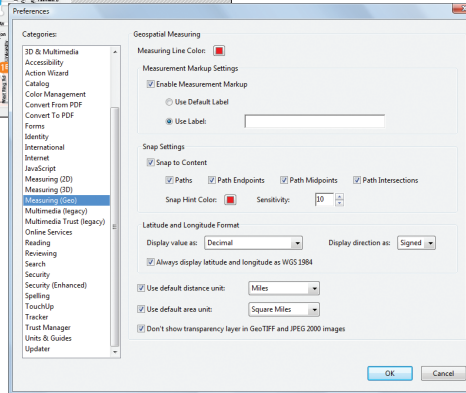
### PDF Maps for iOS and Android

Open geospatial PDF maps on the PDF Maps app for mobile devices. Interact with fully georeferenced maps on smartphones and tablets.



Learn more at [www.pdf-maps.com](http://www.pdf-maps.com)

Get the app, get the map.™

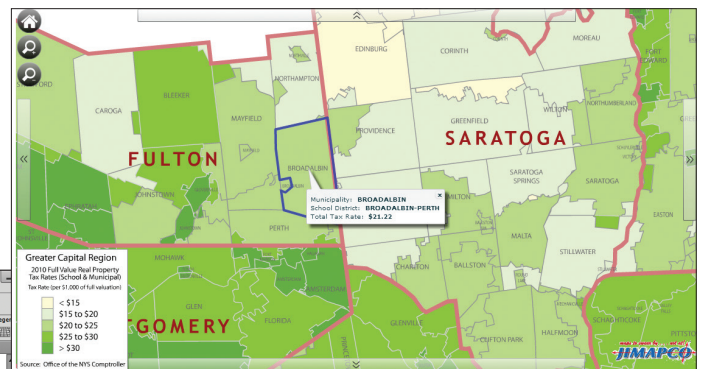
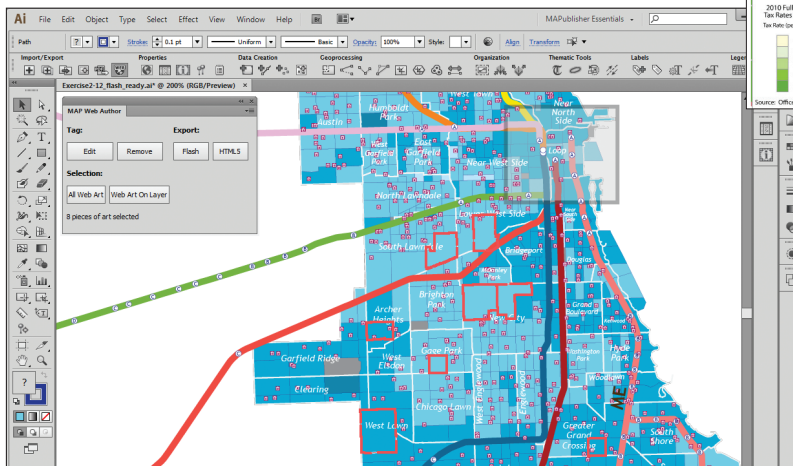


It has never been easier to publish maps to a geospatial PDF. The PDF format is now a truly viable medium for distributing GIS information.

▶ Set preferences in Adobe Acrobat and Adobe Reader

## Export HTML5 and Flash maps with MAP Web Author

MAP Web Author is a standard feature in MAPublisher that works seamlessly with existing Adobe Illustrator and other MAPublisher tools to create interactive HTML5 and Flash web maps automatically without any post-processing or coding. This powerful tool can export web maps directly from new or existing map documents containing GIS data, attribute information, symbols, images, and graphic styles. The output can be customized to include layer control, pan and zoom controls, roll-overs and pop-ups.



Web map courtesy of JIMAPCO.

MAP Web Author automatically creates all the files necessary for immediate placement on a web server or to be locally shared on a network. These maps can be easily embedded into existing web pages and shared online. Cartographic quality web map production has never been simpler and more efficient.

Advanced users can take web mapping further using the highly customizable MAP Web Author JavaScript API and CSS reference.