



# GEOMATICA

## Powerful Image Analysis Software

Trusted by thousands of customers in over 130 countries, Geomatica has long been the comprehensive geospatial software of choice for all of your geo-image processing and analysis needs. Continually improving with an increasing range of functions, Geomatica simplifies ortho-mosaic and other workflows, provides rapid and accurate results, and ultimately saves you time and effort in your geospatial work.

Automation and versatility are the key values that allow you to process, analyze and comprehend geospatial data in our changing world.

## Dedicated to Geospatial Beginners and Experts Alike

PCI Geomatics has been developing complete and integrated software featuring the tools professionals need for remote sensing, digital photogrammetry, image analysis, map production, mosaicking and more for over 30 years. Our strength lies in our uncompromising dedication to being second to none in the imagery processing pillars that are at the foundation of the geospatial world.

### Multi-Sensor Support



With GDB technology, PCI users can directly open and manipulate data from a growing list of over 130 supported geospatial file types.

### The World's Best Ortho



PCI Software is simply the world's best in geometric correction, orthorectification, mosaicking, and DEM extraction.



## Geomatica Strengths

### Better Mosaics

Automatic color balancing saves you time and our manual controls improve your project results. Accurate cutlines and blending reduce touch-ups.

### Powerful Platform

The Geomatica Platform includes direct file handling via Python, including the ability to access raster layers, masks, DEMs and more.

### Unique, Efficient ortho and DEM editing

With Geomatica's Live DEM you can preview your edits without generating an entire ortho-image. Smart GeoFill lets you copy and paste the best parts of overlapping images into your mosaic. The combination makes tricky areas a breeze to correct, saving you time and reducing frustration.

### Dedicated to Sensors

Geomatica supports all major commercial sensors and many others as well. We work closely with data providers so you can rely on timely support for any new commercial platforms.



for more info, please visit us at  
[www.aeromapss.com](http://www.aeromapss.com)

## Automation



Wizard-based tools, batch processing and process modeling are designed to keep your projects moving forward and on schedule.

## A Powerful Platform that Delivers Real-world Results

Geomatica is a powerful and modular platform designed to exist at the core of your geospatial business. Over 550 geospatial functions optimized for performance and accuracy are assembled and integrated to support image analysis, ortho-mosaic production, and workflow automation. Use these to develop new geospatial applications, generate intelligent business products, or customize your output for any number of market demands.

## Automated Color Balancing for Better Mosaics

In Geomatica, advanced image-comparison methods have been developed to produce accurate colors and consistently pleasing results in your projects, with additional tools for manual editing and touch-ups. Seamless mosaics can be produced regardless of season, acquisition time, or imaging sensor. The Geomatica interface and overall workflow eliminates the need for post-mosaic editing in other software, so you can complete your projects in a single pass with all channels and image coordinates included.



Without Geomatica Color Balancing



With Geomatica Color Balancing

Improved color balancing takes the guesswork out of creating truly seamless mosaics.



# Aeromap Technology Systems

P. O. Box 22751, Kingdom of Bahrain ☎ +973-17-530-100 📠 +973-17-533-513  
🌐 [www.aeromapss.com](http://www.aeromapss.com) ✉ [info@aeromapss.com](mailto:info@aeromapss.com) / [sale@aeromapss.com](mailto:sale@aeromapss.com)

## Unique and effective editing tools

Live DEM offers you a simple, less expensive, more efficient way to produce terrain models for your ortho-mosaics. See and edit DTM blunders in an ortho-preview that updates with your changes - You immediately see your fix applied without having to reprocess the entire scene. This makes editing faster, easier, and doesn't require 3D-stereo hardware or the need to regenerate and recheck scenes.

Smart GeoFill provides you with georeferenced copy and paste for imagery. Enhance and retouch ortho-mosaics while maintaining full geo-referencing, channel combinations and bit-depth. By using simple polygon selection in your imagery, you can select, copy and paste the best parts of the best images for your final mosaic. This new feature extends Geomatica's DEM and ortho-mosaic production, or can be used to enhance any type of overlapping images

## Applications and Industries

Agriculture	Disaster Management	Defense and Intelligence
Resource Mapping	Forestry	Wildlife Management
Real Estate	Coastal Monitoring	Utility Management
Mining and Earth	Oil and Gas Exploration	Urban Planning
Surveying	Asset Mapping	Insurance

## Advanced Radar Processing and Analysis

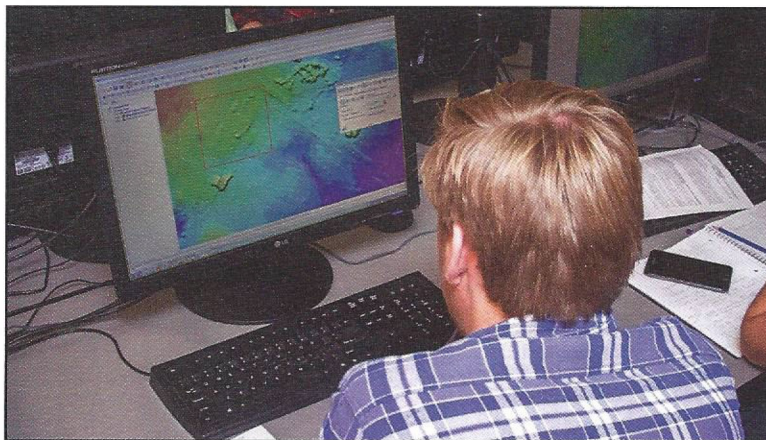
Because of its all weather, any-time monitoring capabilities, Radar remote sensing offers a number of advantages for Earth-surface and feature observation. The Geomatica Radar Suite is purpose-built to provide you with specialized tools for processing radar data in a standard remote sensing or GIS environment. The outputs from PCI Geomatics radar tools can be combined with other microwave and optical sensors as well as vector data to maximize the utility of information. Being part of the full-Geomatica system means this integration is seamless and simple.

In addition to orthorectification and DEM extraction in the Geomatica Radar Suite, the SAR Polarimetry Workstation is a comprehensive toolkit designed to help develop techniques for applying SAR polarimetry to Earth-monitoring and resource management challenges. This state-of-the-art software reads the radiometric and geometric metadata to provide target selection, target analysis, and dataset processing utilities designed specifically for Polarimetric SAR data.

Sensors include: RADARSAT-2, TerraSAR-X, Cosmo-SKYMED, ENVISAT ASAR, ALOS PALSAR, RADARSAT-1, Kompsat-5 and Risat-1.

## Educational and Academic Customers

Geomatica is used by scientists and image professionals across industries to access, analyze, and share all types of data and imagery. Our Educational software solutions make image analysis and data visualization tools easily available to the academic world.



Geomatica Educational Editions support institutes of higher learning with the latest professional tools.



**Aeromap Technology Systems**

P. O. Box 22751, Kingdom of Bahrain ☎ +973-17-530-100 📠 +973-17-533-513  
🌐 [www.aeromapss.com](http://www.aeromapss.com) ✉ [info@aeromapss.com](mailto:info@aeromapss.com) / [sale@aeromapss.com](mailto:sale@aeromapss.com)

## Technical Support

Customer support is a vital part of the PCI experience. We promote a customer-first environment to deliver rapid, accurate, personalized responses, proactive communication and clear, concise solutions for all types of support requests.



## OS Support

Geomatica is available on the following operating systems:



### Windows

Vendor	Microsoft
Supported Versions	64-bit Windows 7 and later

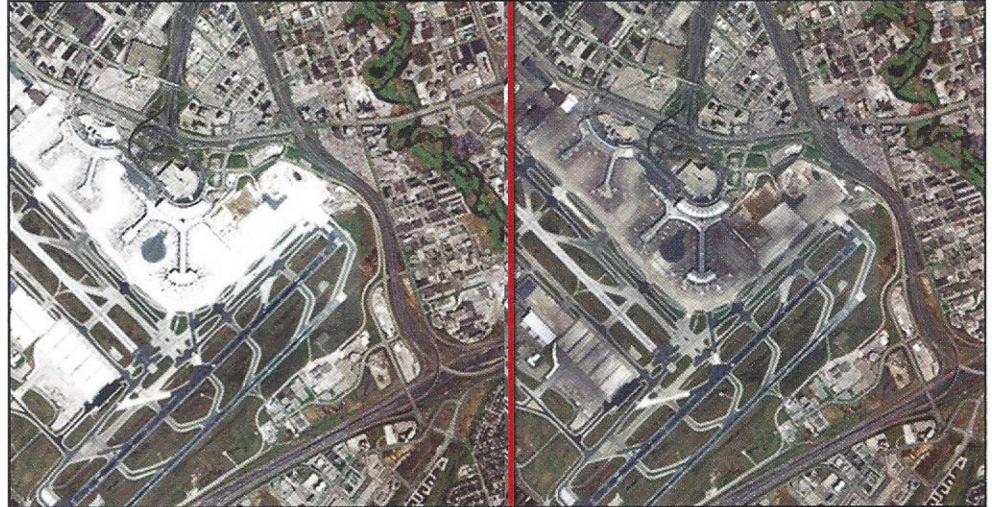
### Linux

Vendor	Various
Supported Versions	Various



## Exposure-correction

Geomatica allows you to automatically decrease brightness on over-exposed pixels and improve the visibility of lost details. Ideally suited to large mosaics as a post-processing step, this algorithm was developed specifically to create better-looking images by giving you the control to adjust exposure variances in any image.



Geomatica's new Auto-Levels tool makes quick work of washed out "hotspots" in your imagery.

## Faster Atmospheric Correction, New Sensors, and More

Geomatica 2015 includes a number of improvements and added features based directly from customer feedback, including: Multi-image GCP collection for aerial projects, real-time preview functionality in the Smart GeoFill tool, increased speed and quality of atmospheric correction, and of course, support for the latest sensors commercially available.

### Updated Sensor Support:

- WorldView-3
- KOMPSAT-5
- DubaiSat-2
- Sentinel-1
- Risat-1
- Cartosat-1
- SPOT-7
- KazEOSat 1
- ZY1-02C

## Flexible Licensing and Operations

- 30-Day Trial available at [GetGeomatica.com](http://GetGeomatica.com)
- Floating Licenses
- Desktop and Server Operations

for more info, please visit us at



[www.aeromapss.com](http://www.aeromapss.com)