

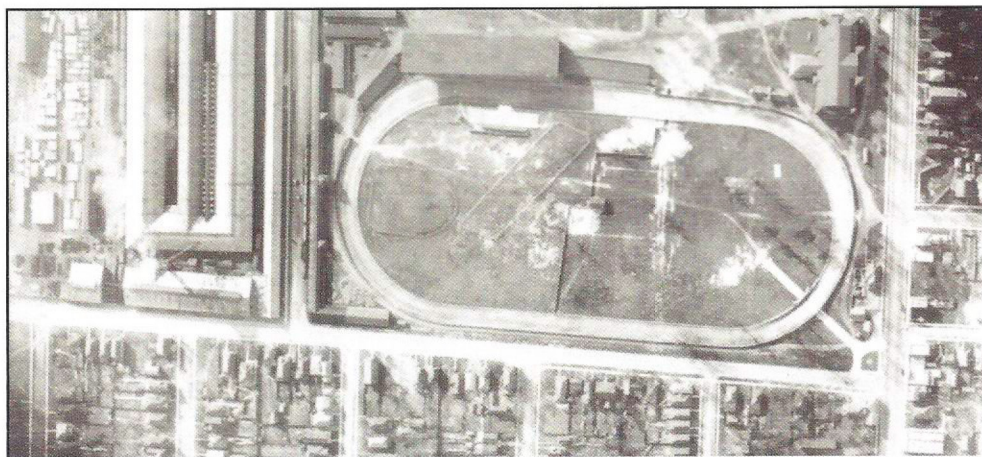
HAP

Historical Airphoto Processing Software

Increased functionality brings increased complexity. Every step added to your image processing environment has the potential to create inefficient, disjointed workflows. PCI Geomatics' custom production workflows help connect disparate tasks and complete complex jobs efficiently.

Using over 30 years of remote sensing knowledge, PCI production workflows combine and streamline common tasks to produce extraordinary products. Our production workflow offerings are easily tailored or expanded to optimize unique operational needs, enabling your organization to focus on core competencies.

Historical aerial photography archives contain valuable information that remains untapped. Digitally scanned and properly geo-referenced historical aerial imagery can bring this information to life, making it possible to analyze/visualize the historical information in modern GIS systems. These historical images can reveal hidden patterns, provide a deeper understanding of changes over time thus leading to better decision making.



Historical image from London, Ontario - 1955
The University of Western Ontario houses over 58,000 paper airphotos in its archives

Automated Processing

"Our previous workflow was very manually intensive. In a 12 month duration, we were able to produce 4,000 individual orthos. Using the new Production Workflow from PCI, we can produce 300 orthos per week, or over 15,000 per year (4 X improvement, with significant reduction in the need for operator intervention)."



Highlights

- **Turn Back The Clock**
Realize the value of your vast archives of historical airphoto imagery. Turn hundreds of thousands of archive images into GIS ready digital mosaics.
- **Automated Tools**
Our production workflows leverage automated algorithms to ingest, orthorectify, color balance and mosaic historical imagery.
- **Process Imagery in Days, not Weeks.**
Cut down on the manual, labor intensive work - our tools will enable you to complete very large processing jobs quickly.



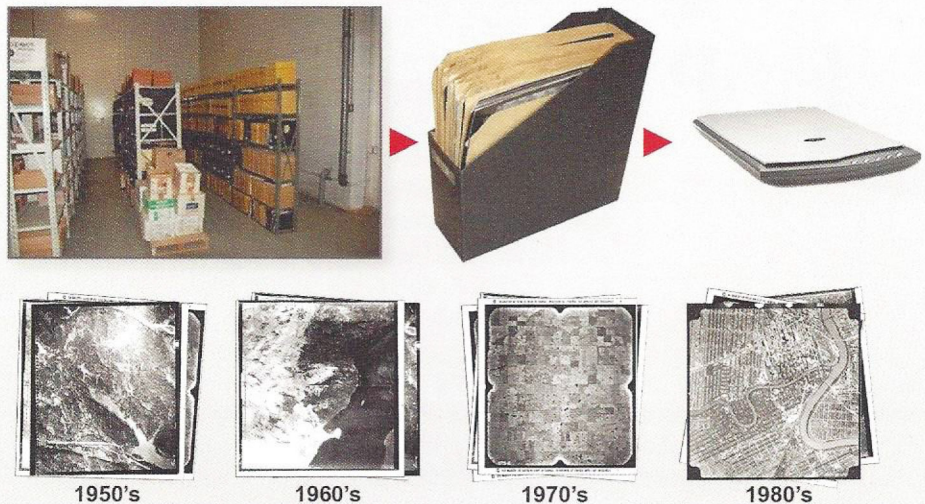
for more info, please visit us at
www.aeromaps.com

Features

- Automated Fiducial Mark collection
- Automated GCP / TP collection methods
- Large volume block bundle adjustment
- Automated mosaicking and colour balancing
- Quality Assurance tools to inspect colour balancing, GCP/TP quality, seamlines

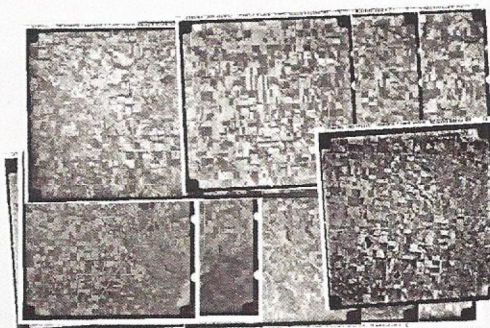
The HAP Workflow

① Scan/Ingest Airphotos



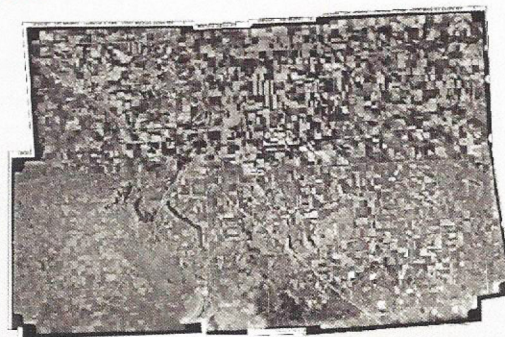
② Coarse Alignment

- Camera calibration information (focal length, flight line information)
- Available image coordinates (typically center coordinate)
- Fiducial marks (automated methods once a few are collected)
- Automated GCP / TP collection for relative positioning



③ Fine Alignment/Mosaic

- Inspect automated GCP & TPs / remove blunders
- Refine search radius to refine accuracy of automated GCPs
- Generate seamlines and color balancing information automatically



for more info, please visit us at



www.aeromaps.com