

## SCANTRAK - Portable digital X-ray system



**SCANTRAK** is a multiple application portable x-ray scanner used by Police, Military, EOD, Customs, Law Enforcement Agencies, Prisons and Building Security Managers.

[Search and examine suspect articles on the spot.](#)

Portable and easy to set up and use in 2 minutes

[Digital image transmission ensures high resolution images](#)

Powerful image analysis and enhancement including Zoom, Inverse b/w, pseudo-color, rotate, 3D, sharpening, smoothing, gamma correction, histogram equalization, summing, measure, annotation

[Image print, fax and e-mail. Archive in excess of 32,000 images on pc or CD](#)

Visual database of x-ray images with query and sort

[Multilanguage and wireless options](#)



*Search behind walls, doors or vehicle panels*

*Bomb Disposal*

*Penetrates exterior wall*



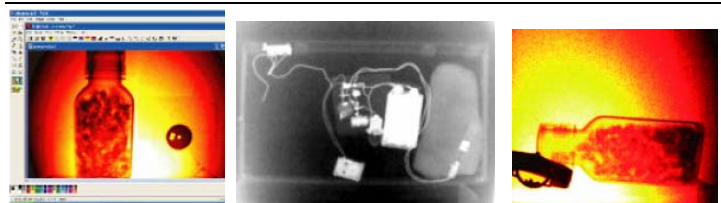
*Find narcotics hidden in vehicle tires*

*Suspicious baggage & parcels*



*Works with ROV's*

*Find contraband, narcotics, weapons*



*Image download to PC for analysis*

*Inverse b/w image clarifies wiring*

*Pseudo-color definition according to density*



*Take measurement*

*Zoom in*

*Build an image library*

### Applications includes:

- Bomb disposal
- Suspect package investigation
- Search for narcotics and hidden contraband
- Searching behind walls & doors
- Vehicle inspections

**SCANTRAK** powerful image enhancement software allows fast evaluation and identification of hard-to-detect objects.

**SCANTRAK** is easily set and deployed in minutes by one person and can be configured to suit different environments. It comes with a choice of X-ray sources, adjustable exposure settings, different size ICU's and has both wireless and ROV capabilities. The system can be ruggedised for Military Applications.

**SCANTRACK - Portable digital X-ray system**

**Standard configurations**



- XR200 or XR150 X-Ray Generator
- Laptop PC
- Image capture Unit (ICU)
- Transportation Case
- 50 meters cable drum and optional wireless control
- Spare Generator Battery
- Battery Charger
- Instruction Manuals



A range of X-ray sources



**Notebook PC Unit**

- Screen: Active matrix 14.1 TFT Color
- Processor: Pentium IV or Centrino 1.4GHZ
- Drives: Hard Disk 40Gb  
3.5 Floppy  
CD ROM/Writer
- Memory: 128MB RAM expandable
- OS: Windows XP (or 98/NT/ME/2000)
- Image Storage: Exceeds 32,000 stored images in .bmp or .jpg
- Power Source: 220VAC 50Hz or rechargeable battery
- Record & Export Facility: Video, Audio & Data, Fax, LAN & Modem 56K

**Image processing**

- |                    |                         |
|--------------------|-------------------------|
| <b>Features</b>    | Brightness and contrast |
| Measure            | Histogram Equalization  |
| Inverse image      | Histocontrast           |
| Pseudo-color image | Grid Overlay            |
| Sub-image          | Sharpen and Smooth      |
| Pseudo-3D image    | Overlay                 |
| Rotate             | Summing                 |
| Clean image        | Copy/Paste              |
| Edge Enhancement   | Multiple Undo           |
| Gamma              | Image Restore           |
| Correction/Stretch | Import/Export Image     |
| Select Region      | Fax/E-mail Image        |

**Other Tools**

- |                   |  |
|-------------------|--|
| Annotation Tools  | Remote X-ray pulse activation                    |
| Calculator        | Visual image database                            |
| User Login        | including name, date, category, place, file name |
| Online help       |  |
| Email, fax, print | Query and sort database                          |

**X-ray source**



- Standard XR200**  
150kV maximum energy  
Penetration: 15mm steel  
Weight: 5,5kgs with battery
- Option 2 XR150**  
Pulsed X-ray with 40beam angle. 150kV maximum energy, 23 microsievert behind beam  
Penetration: 15mm steel  
Weight: 36AWG or 32AWG behind 3mm steel  
2kgs with battery
- Option 3 XRS-3**  
300kV maximum energy  
Penetration: 25mm steel  
Weight: 5.5kgs with battery



**Image Capture Unit (ICU)**

- Standard**
- Image Area: 8x10" (20.32x25.40cm)  
Option: 10x13" (25.4x33cm)  
11x15" (28x38cm)  
Custom sizes available
- Camera: High Performance CCD
- Resolution: 582x752 pixels
- Video Signal: Better than 40DB
- Option: Multi-language/Wireless