

**SCANMAX 15 - With color scan imaging**

**A space saving color mail and parcel scanner at a price you can afford.** You can't always predict what will arrive in your mail but you can protect yourself against nasty surprises. Scanmax X-ray scanners see inside your mail and provide on the spot confirmation of unusual or unexpected packages.

- ❖ Small and compact, yet accommodates most parcels
- ❖ Quick and easy to use
- ❖ A simple mouse control
- ❖ Desk-top or floor standing
- ❖ Latest color technology
- ❖ Front loading door



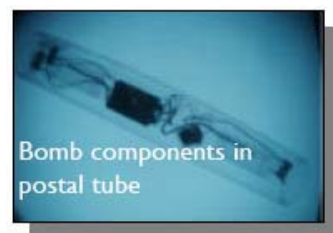
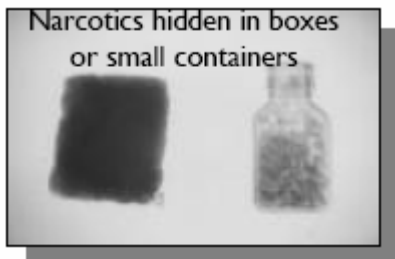
*A simple click of the mouse to recognize everyday items....*



*...to identify suspect packages*



*....to find concealed contraband items*



## SCANMAX 15 - With color scan imaging

page 2

### Reassurance for your staff

SCANMAX 15 mini cabinet X-ray scanner provides on the spot verification of unusual packages giving reassurance to all staff handling mail.

### Compact and Easy to Use

The SCANMAX 15 is designed for easy use by non-technical staff. The front loading door means there are no restrictions on where the unit can be sited. Can be used on a desk-top or on its own wheeled trolley base.

### Rapid Screening

Items are placed into the front loading inspection chamber and a single button action produces a clear image of the contents in seconds.

### Image Enhancement COLORSCAN model

- ❖ Automatic Image Enhancement
- ❖ Negative or inverse image option
- ❖ 8 x zoom
- ❖ 2 colour options for highlighting medium and high density objects



*New high definition monitors (15" or 17") offer improved object recognition. Easy to use trackball mouse offers flexible control*

### Basic B/W model (black and white)

Simple black and white image

### Health and Safety

Scanmax X-ray scanners use very low level X-rays and conform to all published international Electrical Safety and Radiation Standards and are issued with a certified Radiation Safety and Test report.

### X-ray Image Recognition

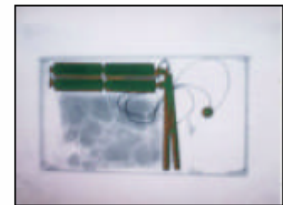
Basic Operator Training and X-ray image recognition charts can be provided.

### Servicing and Support

Full maintenance and back-up support is available. Due to the nature of its design the Scanmax 15 has no conveyor or electrical moving parts that might require expensive servicing



*Know the contents of each package before you decide to open it.*



*Confirm if a package contains harmless video cassette or something dangerous*

## TECHNICAL SPECIFICATIONS

### Physical Specifications

Height: 89 cm (35")  
 Width: 31 cm (12.2")  
 Depth: 50 cm (19.7")  
 Net Weight: 114 kg (250lbs)

### Inspection Chamber

Height: 34 cm (13.4")  
 Width: 30 cm (11")  
 Depth: 40 cm (15.7")

**Door Opening:** W-34 cm (13.4") H-22 cm (8.7")

**Power Requirements:** 110V, 230V, 50/60 Hz

### Shipping Specifications

110 (h) x 72 (d) x 72 (w) cm  
 (43" x 28" x 28")

110 (h) x 72 (d) x 110 (w) cm including trolley  
 (43" x 28" x 43") Ergonomically designed



Ergonomically designed to sit on mail room benches or slip into the corner of your office.

2 Viewing Options: in color or in black and white

Table top or freestanding on wheels

Larger models also available

## SCANMAX 25 - with color scan imaging

A slim-line, large capacity color mail and parcel scanner at a price you can afford. You can't always predict what will arrive in your mail but you can protect yourself against nasty surprises. Scanmax X-ray scanners see inside your mail and provide on the spot confirmation of unusual or unexpected packages.

- ❖ Large inspection chamber accepts postal trays, parcels and briefcases
- ❖ Quick and easy to use
- ❖ A simple mouse control
- ❖ Slim-line Design
- ❖ Latest color technology
- ❖ Freestanding with Front loading door

### Reassurance for your staff

SCANMAX 25 cabinet X-ray scanner provides on the spot verification of unusual packages giving reassurance to all staff handling mail.

### Compact and Easy to Use

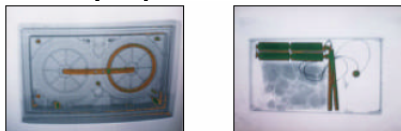
The SCANMAX 25 is designed for easy use by non-technical staff. Combines a large inspection chamber with a slimline cabinet allowing you to examine volume mail, large parcels and briefcases in areas where space is at a premium.

### Rapid Screening

Items are placed into the front loading inspection chamber and a single button action produces a clear image of the contents in seconds.

### Image Enhancement COLORSCAN model

- ❖ Automatic Image Enhancement
- ❖ Negative or inverse image option
- ❖ 8 x zoom
- ❖ 2 colour options for highlighting medium and high density objects



Confirm if a package contains harmless video cassette or something dangerous

### Health and Safety

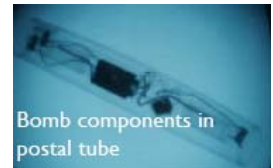
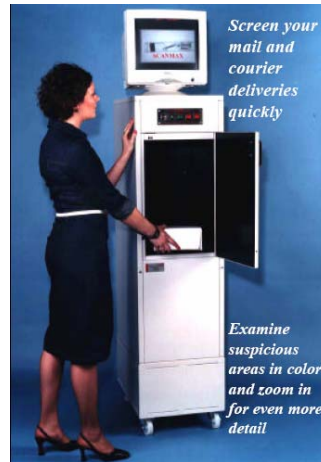
Scanmax X-ray scanners use very low level X-rays and conform to all published international Electrical Safety and Radiation Standards and are issued with a certified Radiation Safety and Test report.

### X-ray Image Recognition

Basic Operator Training and X-ray image recognition charts can be provided.

### Servicing and Support

Full maintenance and back-up support is available. Due to the nature of its design the Scanmax 25 has no conveyor or electrical moving parts that might require expensive servicing



Bomb components in postal tube

Identify suspect items



Razor blades in padded bag

## TECHNICAL SPECIFICATIONS

### Physical Specifications:

Height: 161.5 cm (65.58")  
 Width: 43 cm (16.93")  
 Depth: 61 cm (24.02")  
 Net Weight: 170 kg (330lbs)

### Inspection Chamber:

Height: 53.5 cm (21.06")  
 Width: 42 cm (16.53")  
 Depth: 56 cm (22.05")

### Image Area:

Depth: 54 cm (21.25")  
 Width: 39.5 cm (15.55")

### Door Opening:

Height: 53.5 cm (21")  
 Width: 34 cm (13.6")

### Power Requirements:

110V, 230V, 50/60 Hz

### Shipping Specifications:

150 (h) x 77 (d) x 112 (w) cm  
 (60" x 31" x 45")

Weight 250kgs



Ergonomically designed to fit neatly in the corner of your office.

2 Viewing Options: in color or in black and white

Freestanding unit on wheels

Smaller and Larger models also available